

3920/iPad Interface

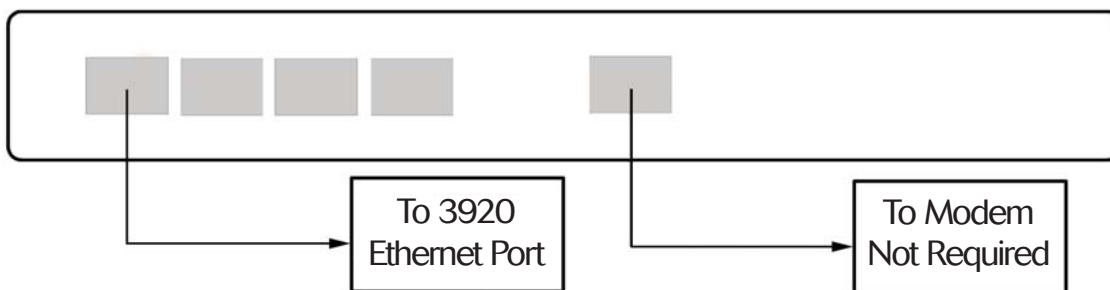


Many people are familiar with the Apple iPad™ and the amazing features it offers. The iPad is an ideal companion for the 3920 to provide remote access anywhere that the iPad can access a wireless network. The 3920 is equipped with a VNC Server application that allows other computers or devices to view and control the instrument from remote locations. This instruction sheet shows how to configure the iPad and 3920 so the iPad can be used as a remote interface.

Requirements for the enabling internet access to the 3920

1. If your network already has wireless connectivity, you can simply connect the 3920 to your existing network connection via a hardwire Ethernet connection. This assumes that the wireless access point is part of the overall network and you can obtain access to the 3920 from that wireless access point. If so, then proceed to step 3.
2. If you do not currently have wireless connectivity, you can connect a wireless router (Access Point) to the Ethernet port of the 3920 directly. As the router may have multiple ports, exercise care in selecting the proper ports. Choose one that is labeled to connect to a desktop or notebook computer and not the one that is supposed to be connected to the modem. The router should be configured as a DHCP Server.

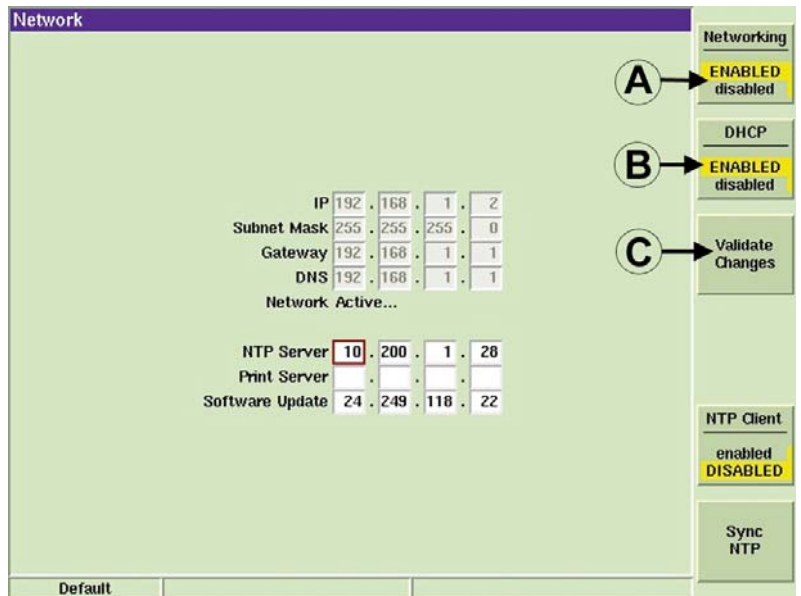
WIRELESS ROUTER



3. On the 3920, enter the Network configuration screen by pressing the UTILS softkey twice, then choosing "Hardware Settings", then "Network" from the menus.
 - a. Set the Networking Soft Key to ENABLED.
 - b. Set the DHCP Soft Key to ENABLED.
 - c. Press the Validate Changes Soft Key.

The Router or Network should now assign an IP address to the 3920.

In this example we will assume that the router has assigned the IP address of 192.168.1.2 to the 3920.



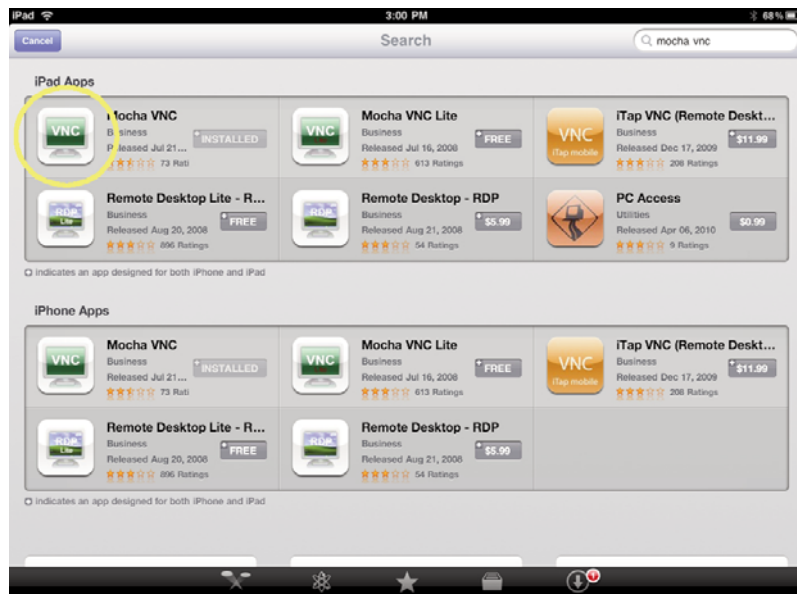
Connecting the 3920 to the iPad

The iPad must have a VNC application installed before it can communicate with the 3920. Aeroflex has used and recommends the Mocha VNC application. To install this app on the iPad, you must:

1. Select the App Store icon on the iPad display.
2. Select Categories at the bottom of the display.
3. Enter "Mocha VNC" in the search bar at the top of the display.



4. Select “Mocha VNC” and install the App as you normally would on the iPad.

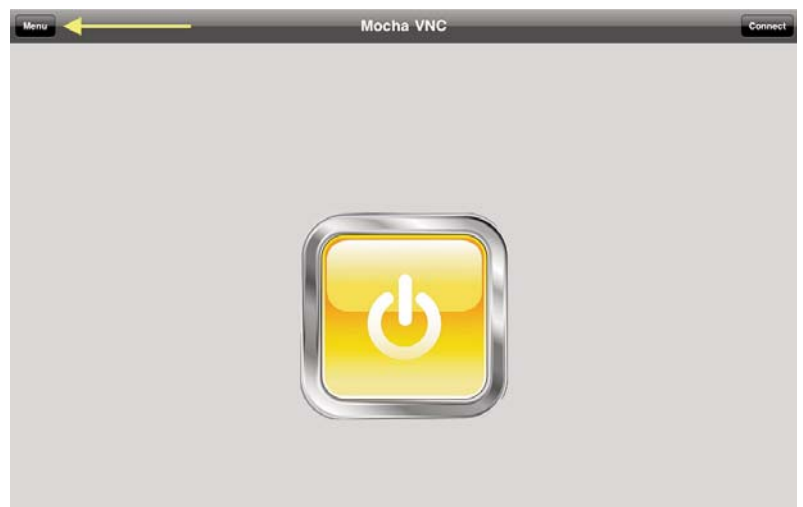


5. After installing the Mocha VNC application, run the program by clicking on the VNC Icon.

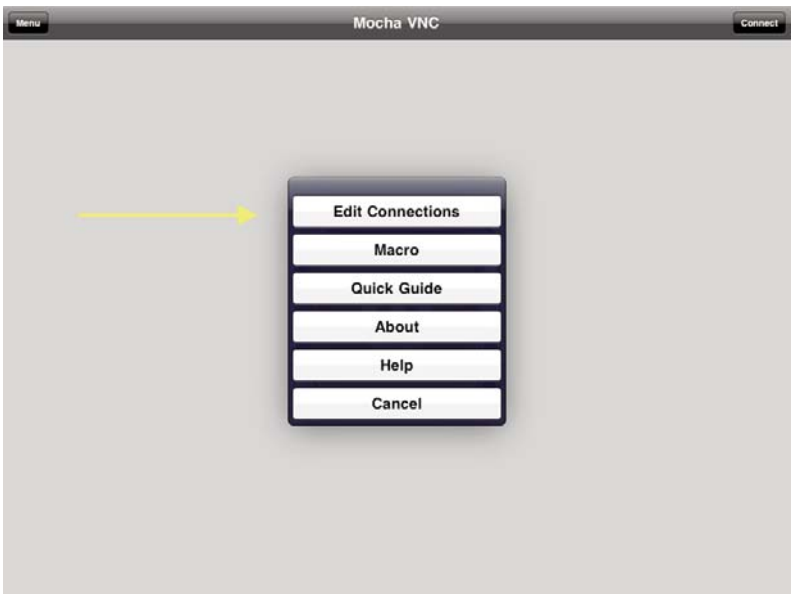
Note: You may have to select the Settings Icon to configure access to your wireless network.



6. Select the Menu button in the upper left corner.



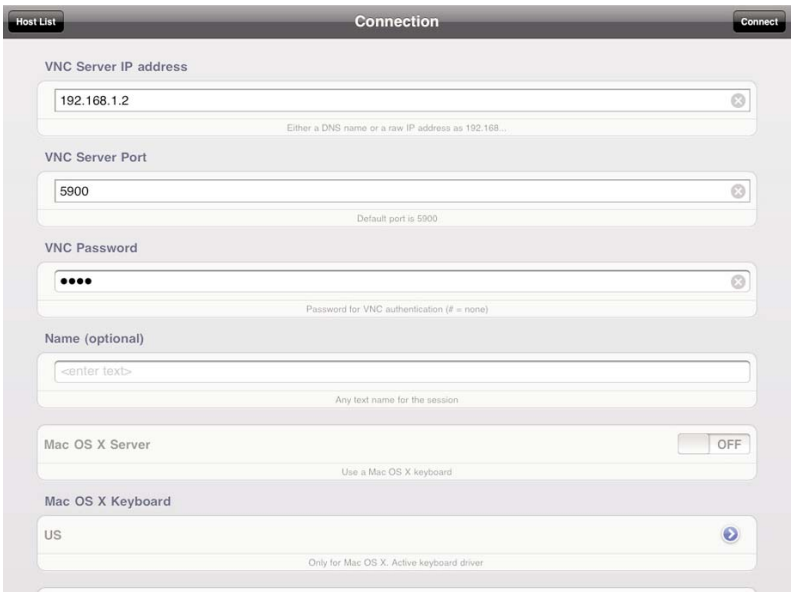
7. Select Edit Connections on the menu.



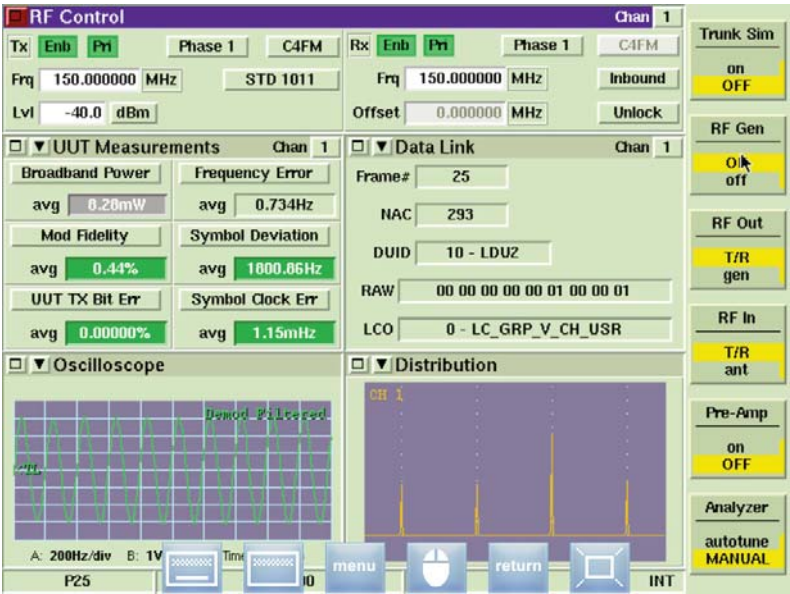
8. Select an empty line item on the page.



- 9. Enter the 3920's IP address in the line item labeled VNC Server IP address (i.e. 192.168.1.2)
- 10. Verify the VNC Server is set to Port 5900
- 11. Enter the VNC Password “3900”.



12. Press the Connect button at the top of the display. The 3920 can now be controlled by touch screen on the iPad.
13. The 3920's VNC default password is 3900. This password can be changed by selecting the UTILS key twice, then "Hardware Settings" and then selecting "Remote" from the menu.



As we are always seeking to improve our products, the information in this document gives only a general indication of the product capacity, performance and suitability, none of which shall form part of any contract. We reserve the right to make design changes without notice.

CHINA / Beijing	Tel: [+86] (10) 6539 1166	Fax: [+86] (10) 6539 1778
CHINA / Shanghai	Tel: [+86] (21) 5109 5128	Fax: [+86] (21) 6457 7668
FINLAND	Tel: [+358] (9) 2709 5541	Fax: [+358] (9) 804 2441
FRANCE	Tel: [+33] 1 60 79 96 00	Fax: [+33] 1 60 77 69 22
GERMANY	Tel: [+49] 8131 2926-0	Fax: [+49] 8131 2926-130
HONG KONG	Tel: [+852] 2832 7988	Fax: [+852] 2834 5364
INDIA	Tel: [+91] (0) 80 4115 4501	Fax: [+91] (0) 80 4115 4502
JAPAN	Tel: [+81] 3 3500 5591	Fax: [+81] 3 3500 5592
KOREA	Tel: [+82] (2) 3424 2719	Fax: [+82] (2) 3424 8620
SCANDINAVIA	Tel: [+45] 9614 0045	Fax: [+45] 9614 0047
*SINGAPORE	Tel: [+65] 6873 0991	Fax: [+65] 6873 0992
SPAIN	Tel: [+34] (91) 640 11 34	Fax: [+34] (91) 640 06 40
UK / Cambridge	Tel: [+44] (0) 1763 262277	Fax: [+44] (0) 1763 285353
*UK / Stevenage	Tel: [+44] (0) 1438 742200	Fax: [+44] (0) 1438 727601
	Freephone: 0800 282388	
*USA	Tel: [+1] (316) 522 4981	Fax: [+1] (316) 522 1360
	Toll Free: 800 835 2352	

* Indicates Regional Service Center

EXPORT CONTROL WARNING: This document contains controlled technology or technical data under the jurisdiction of the Export Administration Regulations (EAR), 15 CFR 730-774. It cannot be transferred to any foreign third party without the specific prior approval of the U.S. Department of Commerce Bureau of Industry and Security (BIS). Violations of these regulations are punishable by fine, imprisonment, or both.

DIR #: 10000015108 AA



88746 A0

AEROFLEX



Our passion for performance is defined by three attributes represented by these three icons: solution-minded, performance-driven, customer-focused.